

Amylase Diffusion Assay

FB **MISC** Crim: **MDL** Plate # **5** Date: **06/29/01**

Assay: **Pass**

Linear Regression Calculation

Well #	[Amylase] U	Log Amylase	Diameter (mm)
1	20	1.301	20
2	2	0.301	17
3	0.2	-0.699	13
4	0.02	-1.699	8
5	0.002	-2.699	5

$r^2 =$ **0.99282**
Slope = **3.9**

Note: Amylase standard yielding r^2 values less than 0.97 must be repeated.

Well#	FB Number	Sample Description	O/E	IA	Results (mm)	Interpretation
6	N/A	Negative Control	N/A	N/A	0	Pass
7	FB99-1904	Pillowcase St. 1A1-B	E	SME	7	(+)
8	FB99-1904	Pillowcase St. 1A2-B	E	SME	8	(+)
9	FB99-1904	Pillow St. 1B1-A	E	SME	8	(+)
10	FB99-1904	Pillow St. 1B1-B	E	SME	0	(-)
11	FB99-1904	Pillow St. 1B2-B	E	SME	8	(+)
12	FB99-1904	Pillow St. 1B2-C	E	SME	0	(-)
13	FB01-1174	Vag.	O	JMC	7	(-)
14	FB01-1048	Und. 1A	E	JCK	10	(+)
15					0	0
16					0	0

Reviewed by: HRR

Date: 6/29/01

(Original Photo in Amylase Binder)

G:\USERS\FBIOLOGY\AMYLASE\AMYTMP.WB3

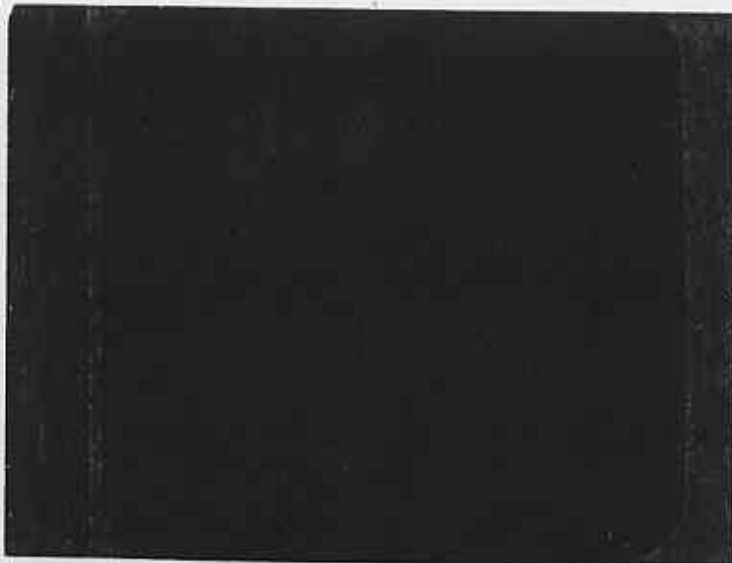
SME

141

AMYLASE DIFFUSION (1/21/01)

FB MISC **ANALYST** MDL **DATE** 6/27/01
Agarose type1 47H1455 **Starch** 125F-0656 **Amylase standard** 67H1563
Amylase Gel Buffer SS
Incubation Time & Temperature: **Start:** 4:30 **End:** 7:30 **Total hrs** 15 **Temp**

- 1 • 2 • 3 • 4 CI
- 5 • 6 • 7 • 8
- 9 • 10 • 11 • 12
- 13 • 14 • 15 • 16



	SAMPLE DESCRIPTION		
1.	α -Amylase standard - 20 units	—	20
2.	α -Amylase standard - 2 units	—	17
3.	α -Amylase standard - 0.2 units	—	13
4.	α -Amylase standard - 0.02 units	—	8
5.	α -Amylase standard - 0.002 units	—	5
6.	negative	—	—
7.	FB 99-1904 pillow case st. 1A1-b	SME	7
8.	" " " " 1A2-b	↓	8
9.	" " pillow st. 1B1-a		8
10.	" " " " 1B1-b		—
11.	" " " " 1B2-b		8
12.	" " " " 1B2-c		—
13.	FB 01-1174 vag	JMC	7
14.	FB 01-1048 Und. 1A	JCK	10
15.			—
16.			—

MDL 6129101 #5

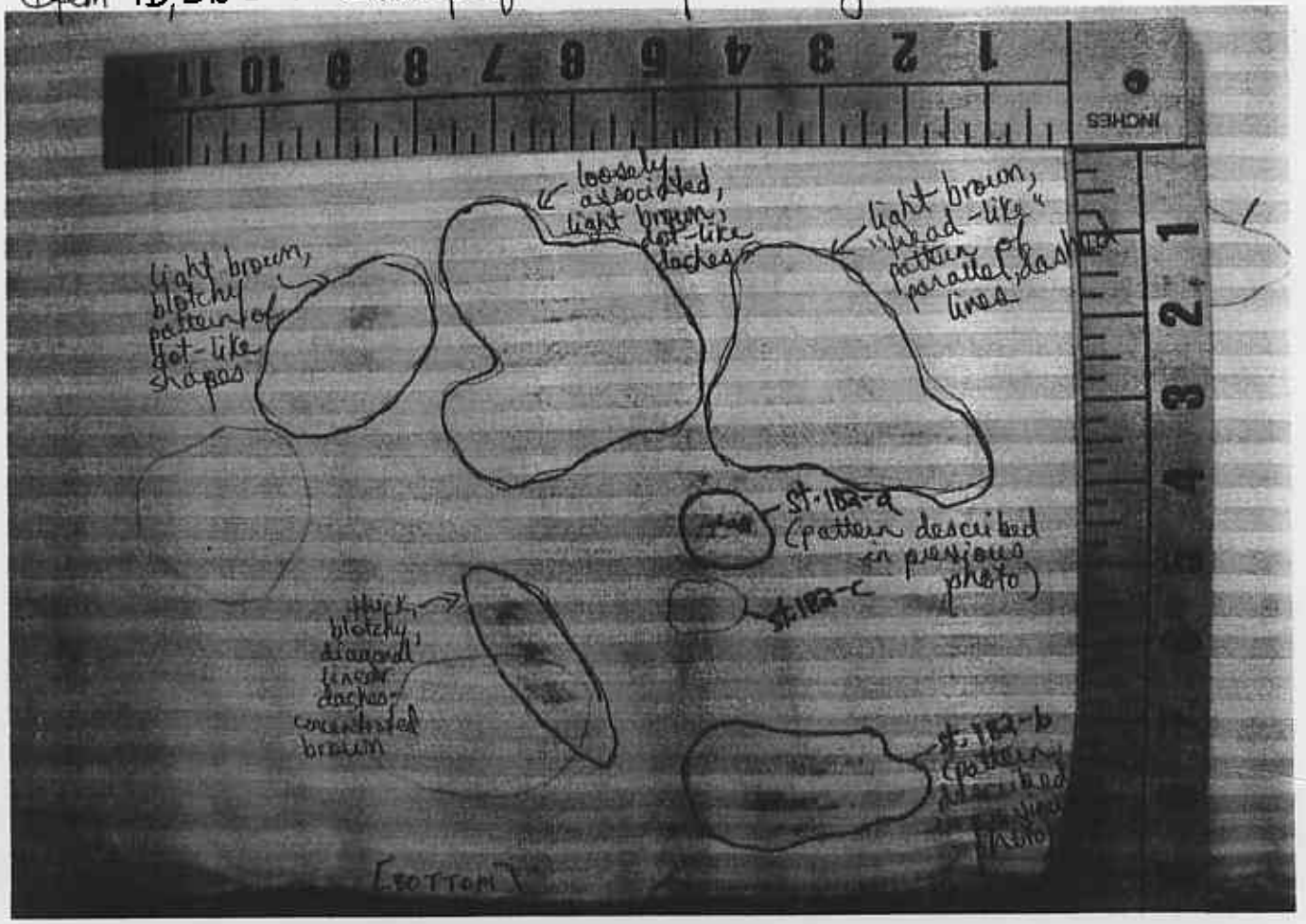
140

Tube setup witness: AL

SME

FB 49-1904
H975783
Item 1B
(v) J. Vega
TRT 6/26/01

Item 1B, side 2: Closeup of linear patterning

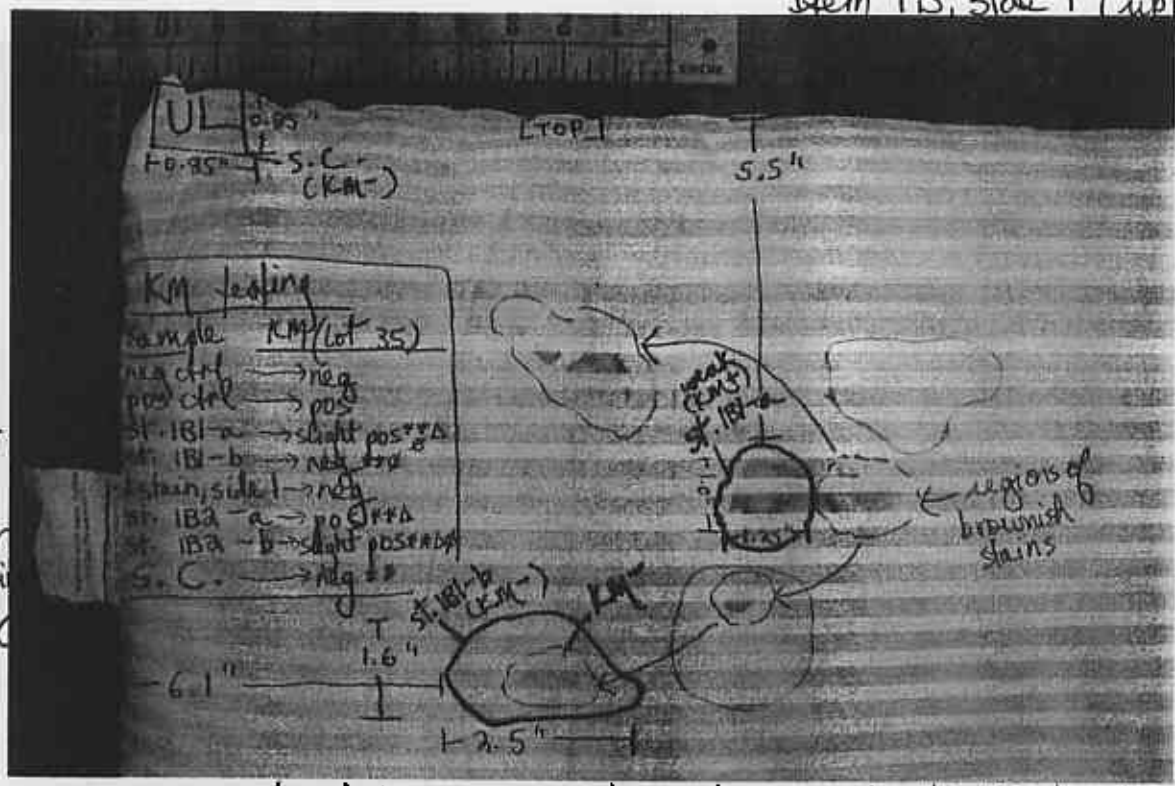


139

SME

FB99-1904
H975783
Item 1B
(v) J. Vega
TRT 6/26/04

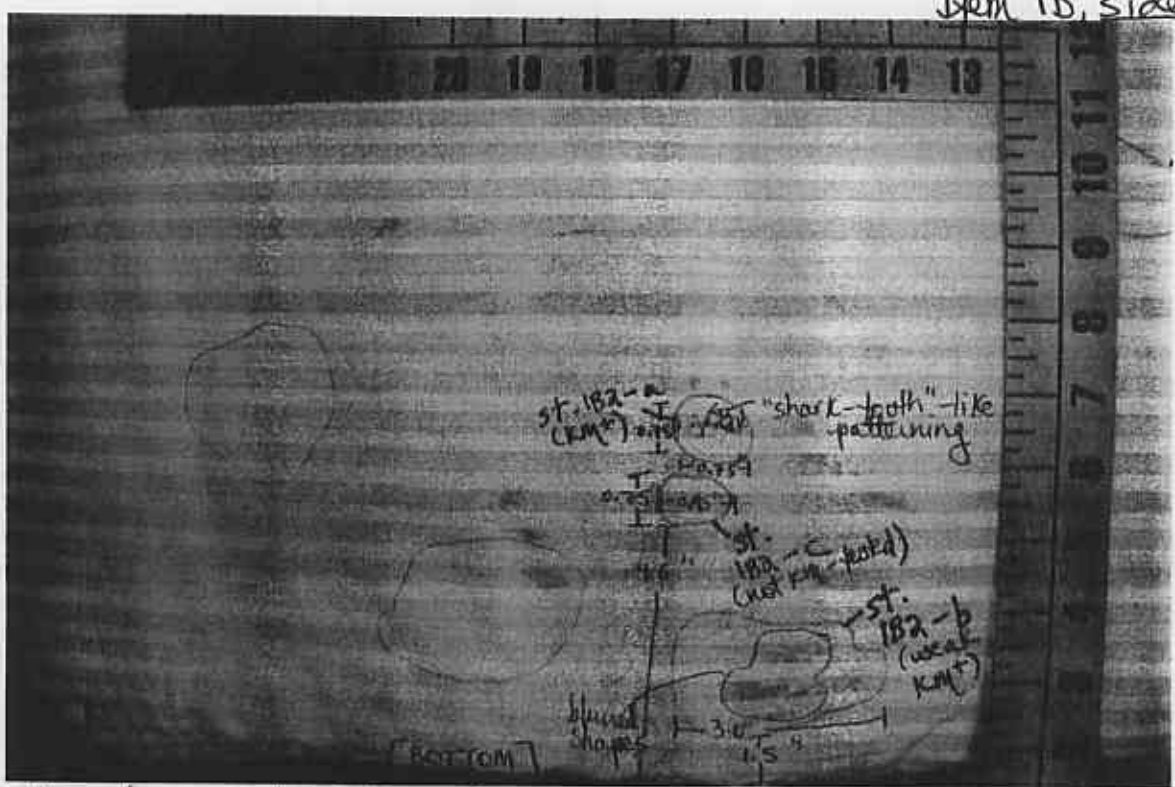
Item 1B, side 1 (upper left)



** will be retained
Δ will be submitted for chelex
δ will be submitted for amylase testing

Fluorescent stains: st. 1B1-a, st. 1B1-b, st. 1B2-b, st. 1B2-c

Item 1B, side 2 (bottom left)



Sample submissions:

Chelex: st. 1B1-a, st. 1B2-a, st. 1B2-b

Amylase: st. 1B1-a, st. 1B1-b, st. 1B2-b*, st. 1B2-c

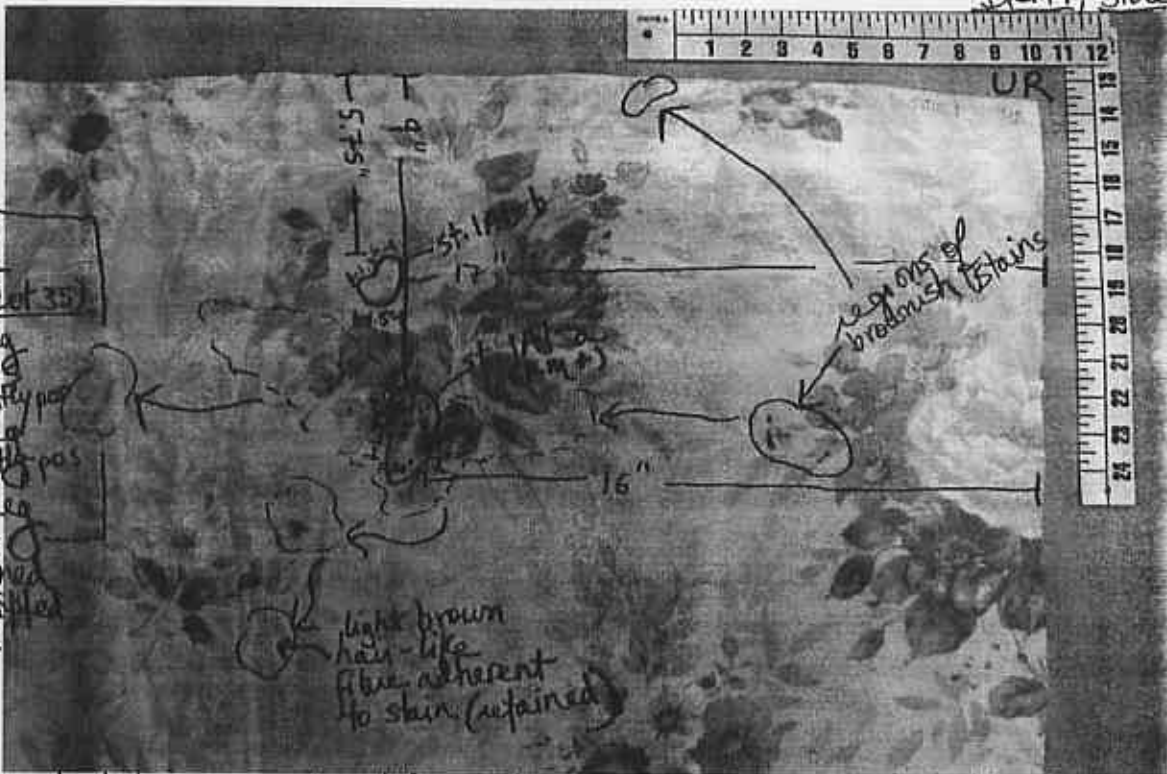
} All samples will be retained, in addition to S.C.

* despite KMP results, more weakly positive than st. 1B2-a, st. 1B2-b will also be submitted for chelex due to apparent distinction in color and density SME TR

138

FD-1-1901
 H975783
 Item 1A
 (V) J. Vega
 TRT 6/25/01

Item 1, side 1, upper right



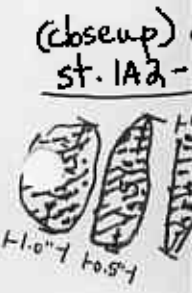
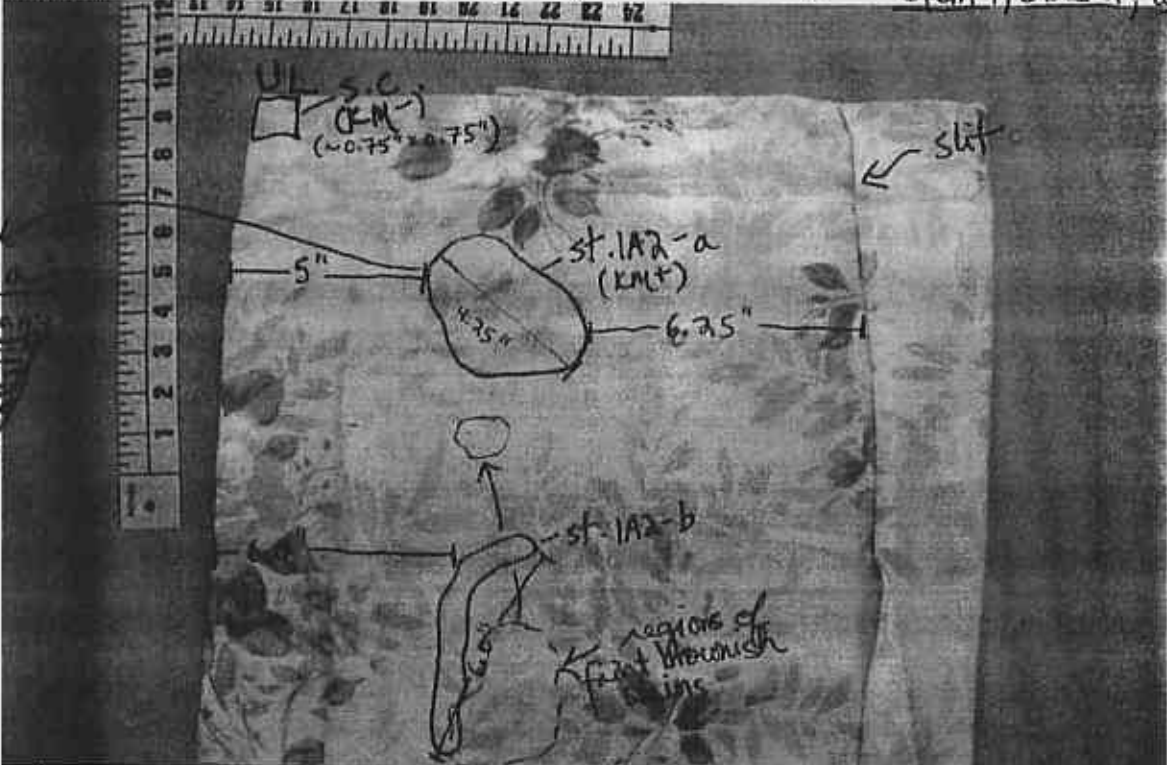
KM-testing

sample	KM (lot 35)
2a ctrl	neg
os ctrl	pos
st. 1A1-a*	slightly pos
2 stains	neg
1A2-a*	slightly pos
S.C.*	neg

* will be retained
 1" " submitted
 for chelex

st. 1A1-a is located within a region of smudge-like brownish stains. This stain consists of 2 vaguely oblong shapes and several blotchy patches. The stain appears faded in color, but a few strands of dark, crusty, clot-like material adhere to the stain surface. Results of KM-testing are shown above.

Item 1, side 2, upper left



st. 1A2-a appears as a "frio" of faded brownish stains bearing a head-like pattern of dashed linear marks. Results of KM-testing are shown above. st. 1A1-b and 1A2-b fluoresced under Luma-lite, and will be cut, retained, and submitted for Amylase testing.

138

SWE TRT

899-1904
H975783
Item 1B
v) J. Vega
TRT 6/26/01

with a series of dot-like marks. The stain has a roughly circular shape, measuring ~ 0.75 " in diameter. This stain is situated near several regions of brownish discoloration, many of which bear "fread-like" patterns of dashed and/or confining linear marks (see photo: "closeup of linear patterning").

st. 1Ba-b is located ~ 1.5 " from the bottom edge and ~ 9.5 " from the right edge of side 2. This stain is brown, lighter in shade and density than st. 1Ba-a, and consists of a blotch portion as well as a surrounding series of linear and circular dashes. The stain is irregularly shaped, measuring ~ 3.0 (at its longest) and ~ 1.75 " (at its widest segment). This stain fluoresces under Luma-Lite, and is weakly KM^+ (lot #35).

st. 1Ba-c is a fluorescent region, circular in shape, measuring $\sim 0.75 \times 0.95$ ". The stain is located ~ 9.6 " from the bottom edge and ~ 11.75 " from the right edge of side 2, in between st. 1Ba-a and st. 1Ba-b. This stain was not tested presumptively for blood, as no blood-like discoloration is apparent.

No further examination of this item will be conducted at this time.

TRT 6/26/01

13b

SMT

TRT